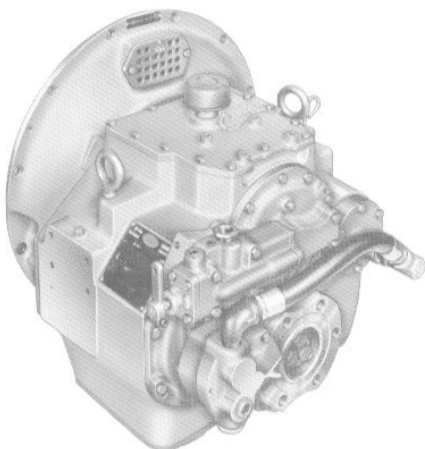


# Model MG-509

## Marine Transmission



- Oil controlled clutch engagement
- Carbureted and hardened gears
- Emergency come-home feature
- Built with jig-bore accuracy
- Rubber block drive
- Ratios: 1.45:1, 2.00:1, 2.48:1, 2.95:1, 3.39:1, 3.83:1, 4.50:1 and 4.95:1
- Equipped with either SAE No. 1 or No. 2 housing
- Dry flywheel housing
- Both clutches removable with transmission attached to engine
- Identical performance and ratios forward or reverse
- Hydraulically-actuated and oil-cooled clutches shift with smooth, fast, fingertip response

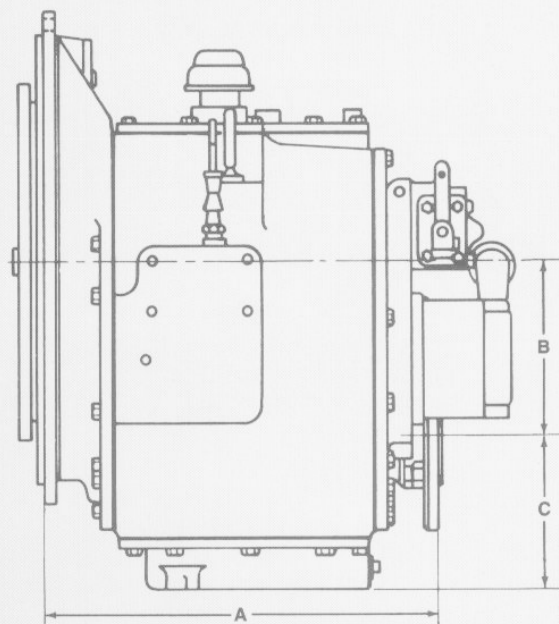
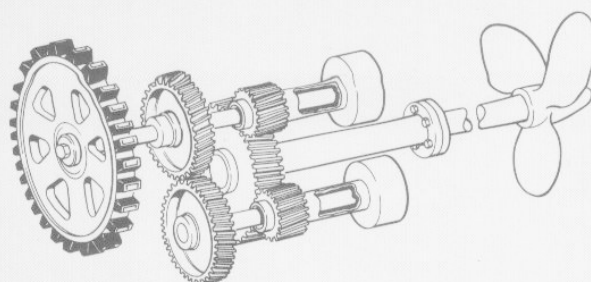
The MG-509 Marine Transmission is the most popular marine transmission in its horsepower range.

The 1.45:1, 2.00:1, 2.48:1, 2.95:1 and 3.39:1 ratio units are identical in design except for the size of the pinions and the countershaft gear. The 3.83:1, 4.50:1 and 4.95:1 ratio units use a deeper case as the center distance of the gears is greater. The carburized and hardened gears are straddle-mounted on anti-friction bearings on short, rigid shafts. The transmission may be purchased with an SAE No. 1 or No. 2 housing.

Three driving rings are available with the No. 1 housing and one driving ring with the No. 2 housing. Maximum safe speed with Part No. A-6911 driving ring is 2300 rpm.

The MG-509 is designed for full horsepower operation continuously in either forward or reverse position.

An externally-mounted heat exchanger, top-mounted power take-off, a mating propeller shaft coupling flange and a trolling valve assembly are available as optional equipment with the MG-509 Marine Transmission. The



### Use Certified Print for Installation

DWG. NO.	RATIOS	A		B	C	APPROX. DRY WGT.
		SAE No. 1	SAE No. 2			
X9816-F	1.45:1					
	2.00:1					
	2.48:1	396.7 mm (15.62")	419.6 mm (16.52")	173.2mm (6.82")	148.6mm (5.85")	259 kg (570 lbs)
	2.95:1					
	3.39:1					
X9835	3.83:1	441.5mm (17.38")	464.3mm (18.28")	241.0mm (9.49")	238.8mm (9.40")	327 kg (720 lbs)
	4.50:1					
	4.95:1					

trolling valve is applicable to both right-hand and left-hand rotation engines turning either right-hand or left-hand propellers.

### Heat Exchanger

Kits available from Twin Disc consist of a heat exchanger with flexible hoses and necessary fittings for installation on the top cover plate of the transmission. Customers who wish to furnish their own heat exchanger should contact the nearest Twin Disc or marine engine distributor. When ordering, specify if raw or fresh water is to be used in the heat exchanger. Heat exchanger can be remotely-mounted if a top PTO is used.